



The Shanghai Edition, Shanghai

editionhotels.com/shanghai

The latest outpost of Edition Hotels is the new place to see and be seen in China

The brainchild of a hospitality visionary

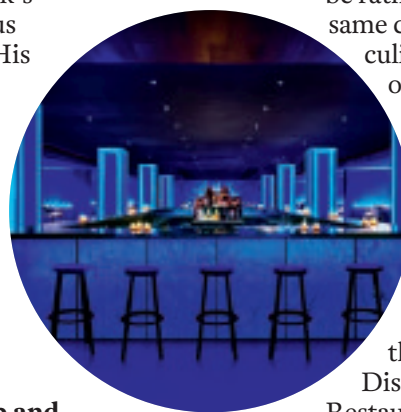
When Ian Schrager unveils a new hotel, the world sits up and takes notice. After all, the 72-year-old entrepreneur not only pioneered the concept of the boutique hotel back in 1984 – and has pushed the envelope in hospitality ever since – he was also the co-founder of New York's most storied, glamorous superclub, Studio 54. His latest project is this Shanghai beauty; part of his Edition Hotels brand, it's a sleek, 145-room property set in the former Art Deco headquarters of the Shanghai Power Company.

A theatrical nightclub and restaurants galore

Party seekers and late-night

The hotel's lobby bar features plaster relief artwork inspired by traditional carvings

revellers should hit the dance floor at glam nightclub Electric Circus. It's modelled after the world-famous Studio 54, and just like the latter did, it features dramatic lighting, theatrical sets and a roster of big-name DJs, making it the latest power player shaking up the city's nightlife scene. While the hotel's interiors may be rather understated, the same can hardly be said of its culinary and lifestyle offerings, which number a whopping nine in total. British celebrity chef Jason Atherton heads up all-day brasserie-style restaurant Shanghai Tavern, as well as izakaya-inspired Hiya; then there's also Canton Disco by Black Sheep Restaurants, which serves up a contemporary take on traditional Cantonese cuisine. »



PARTY PALACES



Easy access to key attractions

The hotel's location on Nanjing Road East – the city's main commercial thoroughfare – means that guests have a wealth of retail options at their doorstep. Shanghai New World Daimaru, a glitzy mall that's home to the world's largest spiral escalator, is just across the road; navigate the heaving crowds and you'll find international boutiques cheek by jowl with traditional shops and eateries. Plus, the Bund waterfront is mere minutes away.

A pared-down aesthetic

Schrager declared that he wanted to avoid any design clichés, and indeed, you won't find any ornate dragon motifs or jade fittings here. Instead, simplicity prevails: the light-filled guestrooms are clad in blonde oak, while bathrooms are rendered in white marble. Any references to Chinese culture are subtle. For instance, taking pride of place in the atrium is a spherical pendant light ensconced in metal prongs, gleaming like an enormous pearl; while over at the Lobby Bar, guests can admire intricate plaster artwork inspired by carvings that typically adorn traditional shikumen housing.



Singapore Airlines (SIA) flies to Shanghai four times daily and to Brisbane four times daily. SilkAir, SIA's regional wing, flies to Phuket five times daily.

Baba Beach Club, Phuket

bababeachclub.com

Hit the decks

Baba Beach Club is the wild little sister of five-star Sri Panwa in southern Phuket. Managing director Vorasit “Wan” Issara is passionate about all things music, and his vision was to attract big-name DJs and develop a bona fide party scene. The music is played on top-notch British stereo system Funktion-One, and on 19 January, the resort will host iconic Ibiza party brand Circoloco.

The life aquatic

Neon unicorns and waterproof beanbags float around the



beach club's central feature, a circular swim-up bar that's been fabulously framed with a mirrored awning somewhat resembling a disco ball.

Sino-Portuguese meets Shanghai Tang

The chinoiserie-chic theme is apparent once you wander in through the moon gate walkways in the reception and past bright orange ceramic garden stools and a teal antique cabinet. The cool stone floors and dark wood accents used in the bedrooms provide a toned-down escape from the poolside action.

W Brisbane, Brisbane

marriott.com/hotels/travel/bnewh-w-brisbane

A new kind of lodging

Brisbane's first W property, and the city's first five-star hotel in 20 years, has been a game-changer for the local industry. Interior designer Nic Graham carefully themed the hotel around the idea of “A River Dreaming”, tapping into the waterside location with reed-like timber fittings, a neon-lit elevator, reflective walls, iridescent lighting and rich-patterned carpets.

Party supplies

The turquoise-hued Mix Bar comes with enough generously proportioned bottles of booze



to prop up any respectable pre-party. Also helping you get in the mood are pre-set lighting options, Bowers & Wilkins Bluetooth sound systems and 55-inch LED TVs in the rooms.

Thirsty work

Aside from the Living Room bar in the foyer, there's also the level four Wet Deck poolside bar where the good times are turned up to stun. Barkeeps shake cocktails on an alfresco balcony and the pool's striking optical-art-style paintwork is perfect for the Instagram crowd. DJs play at both bars most nights of the week.

WORDS: DELLE CHAN (THE EDITION SHANGHAI), ALEXANDRA KARPLUS (BABA BEACH CLUB) AND MATT SHEA (W BRISBANE)